

New Parents Meeting 2025



Welcome

Welcome to Kirby Muxloe Primary School. This presentation aims to give you a little more information about our school.



Meet the Staff

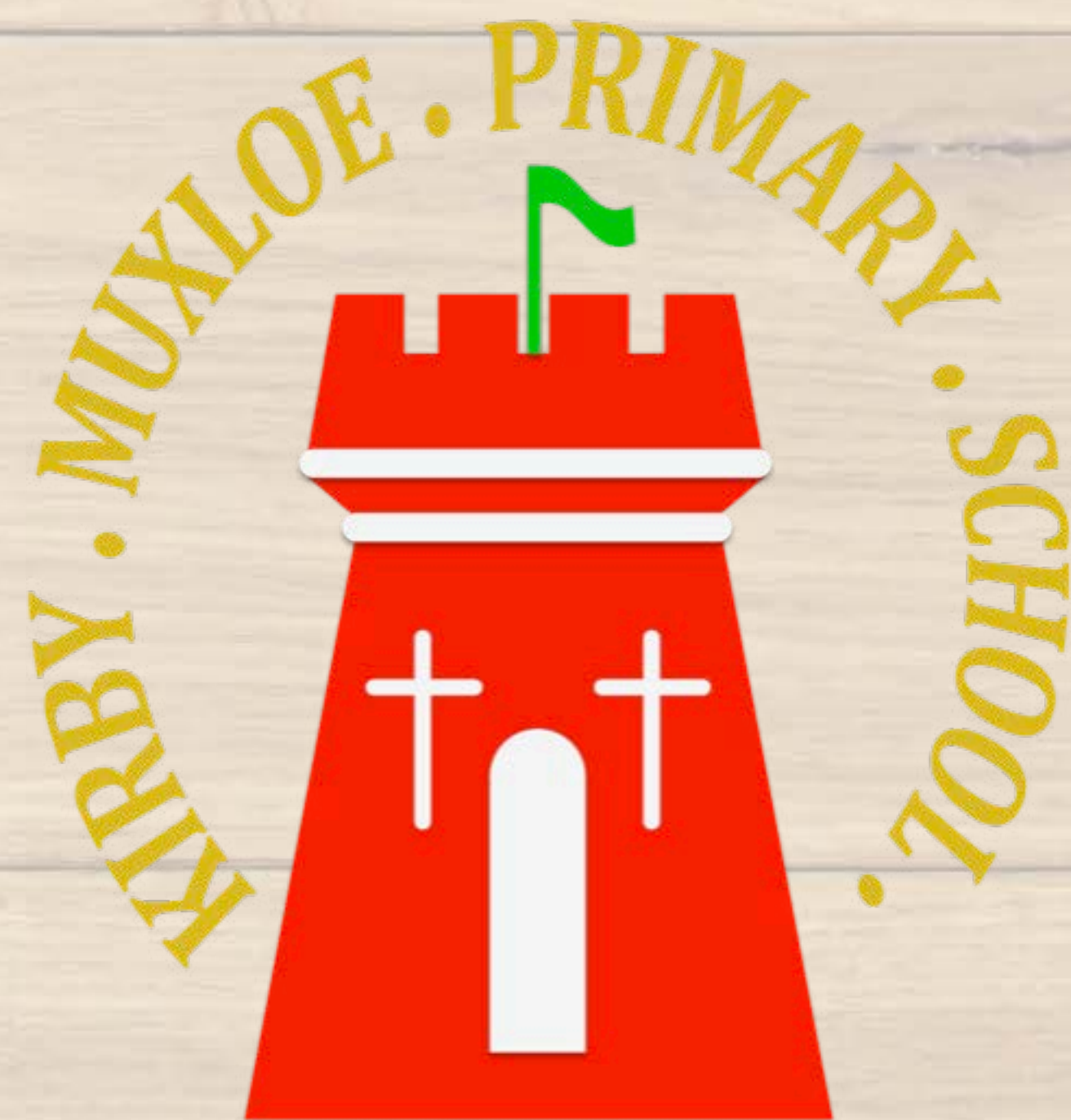
Mr Elliot Howles – Headteacher

Mrs Laura Button – EYFS Lead and Class Teacher

Mr Chris Hulbert – English and Phonics Lead

There are 2 classes in EYFS, both led by a class teacher and supported by learning support assistants.

PJA





KMPS Values 2025

Kirby Muxloe Primary School

‘Good People, Great Learners’

Kindness

Resilience

Integrity

Aspiration

Respect

Reflectiveness

School Meals – Dolce

School meals are provided by Dolce.

All children from Years Reception to 2 are entitled to free school meals. Please see information in your starter pack.



Pupil Premium

- If you receive certain benefits or have a household income below a government threshold please complete the application form in your welcome pack.
- The school will then receive valuable extra funding to help finance your child's school trips and residential trips as well as support in school.
- We can discuss this more at your home visit or please contact the school office for more information.

Starting School

Recent research conducted surveyed 1,000 parents and asked them what their top concerns with their child starting school.

1. Settling In

2. Making Friends

3. Going to the Toilet

4. Behaving

5. Liking their Teacher

6. Not Eating Their Lunch

7. Losing Their Belongings

8. Not Drinking Enough Water

9. Getting Lost

10. Finding School Work Tricky

Settling In

We have a comprehensive transition process that involves the following:

1. Nursery and Pre-School Teacher Visits

2. New Parents' Meeting

3. Local Nursery and Pre-School Visits to School

4. Transition Days

5. Home Visits

Transition Days

- Children have been invited into school on either Wednesday 2nd or Thursday 3rd July. You will have received a separate letter informing you of the process and what date and time this will be.
- We will open a gate near the classroom entrance for you to come in and out.
- The children will receive a letter on this day informing them of their new classes.



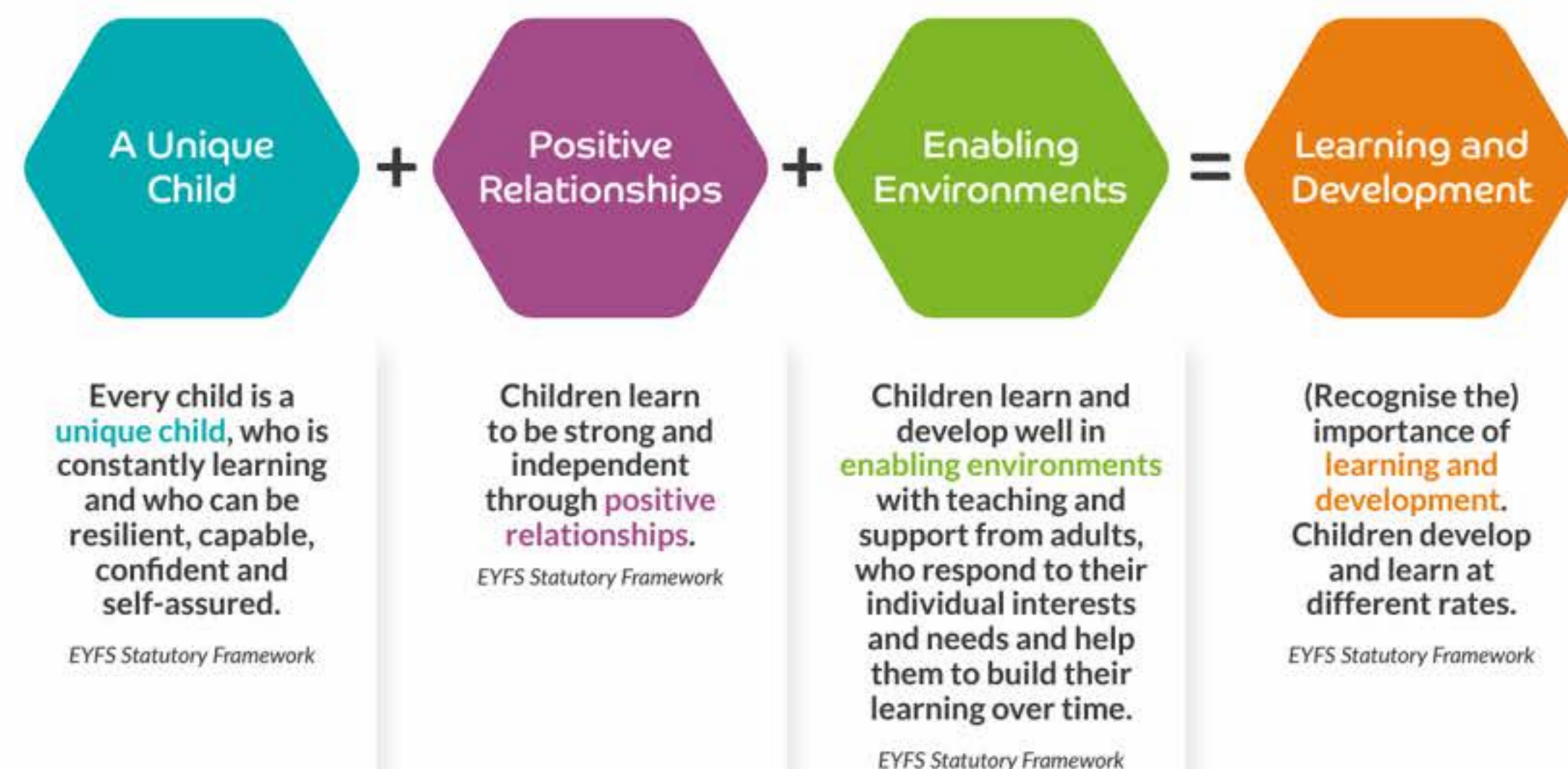
Home Visits

- Tuesday 26th August, Wednesday 27th August, Thursday 28th August, Friday 29th August and Monday 1st September are the days home visits will take place.
- We will be providing an online system to sign up for these. You will receive this information on the same letter as your child's class.
- These visits are very important. They give us the opportunity to start building the home-school partnership in a familiar environment. Write down anything you need to know or want to ask

Starting School in September

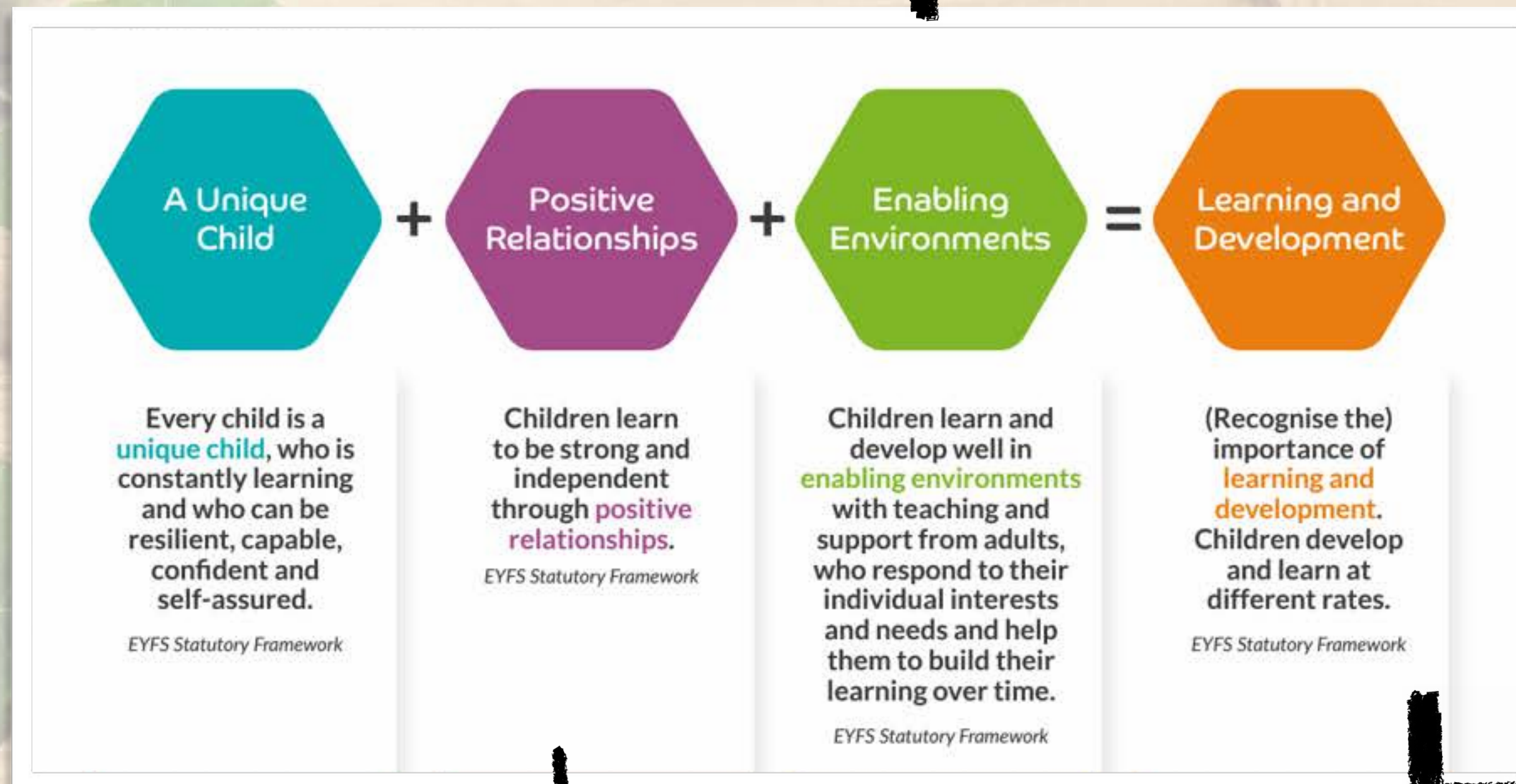
- Children will officially start school on Tuesday 2nd September and come to us initially for mornings from 8.45 – 11.30 through to Wednesday 10th September.
- On Thursday 11th September and Friday 12th September, children will stay for lunch and finish at 12.30.
- From Monday 15th September children will start full time, 8.40 – 3.10

EYFS Principles



The Early Years Foundation Stage (EYFS) curriculum is a statutory curriculum which all settings must follow from birth to the end of the academic year in which a child turns five. The EYFS principles are shown below. These underpin the teaching and learning that takes place throughout the year.

EYFS Principles



Staff, the provision and how we use the provision and our knowledge of the children's developmental stages to further learning. Children learn through a mixture of adult led and child initiated activities.

Based on Ranges 1– 6 which look at children's chronological age, not year groups.

US!

EYFS Curriculum

Prime Areas

Communication and Language
Physical Development
Personal, Social and Emotional
Development



Specific Areas

Literacy
Mathematics
Understanding the World
Expressive Arts and Design

ELGs (Early Learning Goals)

EYFS Early Learning Goals		Support in Birth to 5 Matters	
CL	Listening, Attention and Understanding	CL:	Listening and Attention
	Speaking	CL:	Speaking
PSED	Self-Regulation	Characteristics of Effective Learning	
		PSED:	Understanding Emotions
		CL:	Listening and Attention
	Managing Self	Characteristics of Effective Learning	
		PSED:	Understanding Emotions: Sense of Self
		PD:	Health and Self-care
	Building Relationships	PSED:	Making Relationships
PD	Gross Motor Skills	PD:	Moving and Handling
	Fine Motor Skills		
L	Comprehension	CL:	Understanding
	Word Reading	L:	Reading
	Writing	L:	Writing
M	Number	M:	Mathematics
	Numerical Patterns		
UW	Past and Present	UW:	People and Communities
	People, Culture and Communities		
	The Natural World	UW:	The World
	(No ELG)	UW:	Technology
EAD	Creating with Materials	EAD:	Creating with Materials Being Imaginative and Expressive
	Being Imaginative and Expressive		

The children will work towards 17 Early Learning Goals (ELGs). These consist of 3 prime areas and 4 specific areas.

We use Birth to 5 Matters to support children's progress towards the statutory ELGs. In order to achieve a Good Level of Development (GLD), children need to have met the ELGs in 12 of the 17 ELGs.

 - Prime Areas

Early Reading

Read Write Inc.
Phonics

Storytelling

Communication and Language

The development of children's spoken language underpins all seven areas of learning and development. Children's back-and-forth interactions from an early age form the foundations for language and cognitive development. The number and quality of the conversations they have with adults and peers throughout the day in a language-rich environment is crucial. By commenting on what children are interested in or doing, and echoing back what they say with new vocabulary added, practitioners will build children's language effectively. Reading frequently to children, and engaging them actively in stories, non-fiction, rhymes and poems, and then providing them with extensive opportunities to use and embed new words in a range of contexts, will give children the opportunity to thrive. Through conversation, storytelling and role play, where children share their ideas with support and modelling from their teacher, and sensitive questioning that invites them to elaborate, children become comfortable using a rich range of vocabulary and language structures.

Taken from
EYFS Statutory
Framework

Literacy

It is crucial for children to develop a life-long love of reading. Reading consists of two dimensions: language comprehension and word reading. Language comprehension (necessary for both reading and writing) starts from birth. It only develops when adults talk with children about the world around them and the books (stories and non-fiction) they read with them, and enjoy rhymes, poems and songs together. Skilled word reading, taught later, involves both the speedy working out of the pronunciation of unfamiliar printed words (decoding) and the speedy recognition of familiar printed words. Writing involves transcription (spelling and handwriting) and composition (articulating ideas and structuring them in speech, before writing).

Environment

The indoor and outdoor environments are set up to promote quality interactions, language development and storytelling. Books are available in all areas and text is clearly visible.

Phonics and RSW



We teach phonics and 'Ready Steady Write' from the first full time week and children are provided with appropriate homework to support their stage of learning. Quality texts underpin RSW and texts used in Phonics are matched to the children's ability, as are the books that are sent home.

Any Questions?

